

1. What is the name of the participatory forest management project in Kerala's Periyar Tiger Reserve?

- A. Vidiyal Vanapathukappu Sangam
- B. Marayoor Initiative
- C. Sandalwood Conservation Project
- D. Pulikal Pathukappu Amaippu



- ✓ **The participatory forest management project in Kerala's Periyar Tiger Reserve is called "Vidiyal Vanapathukappu Sangam" which translates to "The Dawn Forest Protection Group" and primarily involves former poachers and sandalwood smugglers turned protectors of the reserve. This project actively engages former poachers, providing them with alternative livelihoods like tourist guiding and anti-poaching activities. The project has been credited with significantly reducing poaching in the Periyar Tiger Reserve and safeguarding the area's sandalwood reserve.**

2. Which grassland in Karnataka was recently declared a conservation reserve?

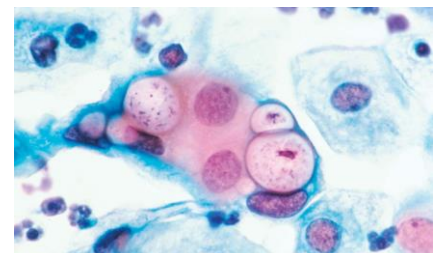
- A. Chitradurga Grassland
- B. Kolar Grassland
- C. Hesaraghatta Grassland
- D. Nagarhole Grassland



- ✓ **The Karnataka State Wildlife Board recently approved the declaration of Hesaraghatta grassland as the Greater Hesaraghatta Grassland Conservation Reserve. This decision aims to protect green spaces in Bengaluru amid urban expansion. The area encompasses 5,010 acres, including multiple lakes & forest areas. The move addresses long-standing demands for environmental conservation.**

3. What kind of infection is Trachoma, recently eliminated by India as a public health problem?

- A. Bacterial
- B. Fungal
- C. Viral
- D. Parasitic



- ✓ **The World Health Organisation (WHO) has announced that India has eliminated Trachoma as a public health problem. India is the third country in the South-East Asia Region to achieve this milestone. Trachoma is caused by the bacterium Chlamydia Trachomatis and affects the eyes.**
- ✓ **It spreads through contact with secretions from the eyes, eyelids, nose, or throat of infected individuals. If untreated, it can lead to irreversible blindness. It primarily affects communities in poor environmental conditions, with 150 million people worldwide at risk, including 6 million who are blind.**

4. Which state recently organized the Ustad Allauddin Khan Festival?

- A. Madhya Pradesh
- B. Andhra Pradesh
- C. Kerala
- D. Karnataka



- ✓ **The Ustad Allauddin Khan Festival was recently organized in Madhya Pradesh. The festival is held in Maihar, Madhya Pradesh, and is dedicated to the renowned musician Ustad Allauddin Khan.**
- ✓ **The three-day event features performances by many renowned personalities from across the country. It is organized by the Madhya Pradesh Culture Department, Ustad Allauddin Khan Music and Art Academy, and the Maihar District Administration, running until October 10. Ustad Allauddin Khan was a prominent figure in music, known for his efforts to promote Madhya Pradesh's musical tradition and engage the younger generation.**

5. Who have been awarded the 2024 Nobel Prize in physics?

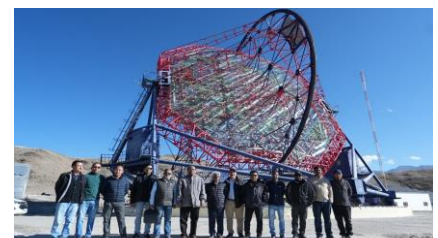
- A. Donald P. Schneider and Joel Nathan Butler
- B. John Hopfield and Geoffrey Hinton
- C. Subir Sarkar and Joss Bland- Hawthorn
- D. Max Planck and Richard Feynman



- ✓ **The 2024 Nobel Prize in Physics has been awarded to John Hopfield and Geoffrey Hinton for their groundbreaking work in machine learning with artificial neural networks. Machine Learning (ML) is a branch of artificial intelligence (AI) focused on creating systems that learn from data. ML enables systems to adapt and improve as they gain more experience. Algorithms in ML identify relationships and patterns in data, making predictions and classifying information.**

6. Recently, the MACE Observatory has been inaugurated in which state/UT?

- A. Ladakh
- B. Uttarakhand
- C. Himachal Pradesh
- D. Lakshadweep



- ✓ **The MACE Observatory was recently inaugurated by the Secretary of DAE and Chairman of the Atomic Energy Commission in Hanle, Ladakh. It is the largest imaging Cherenkov telescope in Asia and the world's highest, located at an altitude of about 4,300 meters. The Major Atmospheric Cherenkov Experiment (MACE) aims to enhance international collaborations and strengthen India's role in space research.**

- ✓ Indigenously built by the Bhabha Atomic Research Centre (BARC) with help from ECIL and other Indian industry partners, it will advance studies in astrophysics and particle acceleration. MACE will observe high-energy gamma rays, aiding global research on phenomena like supernovae, black holes, and gamma-ray bursts while supporting Ladakh's socio-economic development.

7. Which country is the host of World Pickleball Championship series?

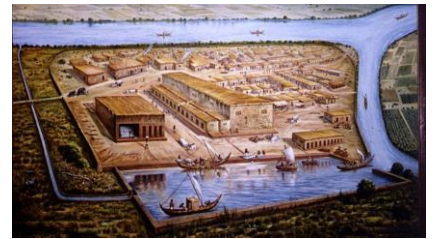
- A. Myanmar
B. India
C. China
D. Nepal



- ✓ The All-India Pickleball Association (AIPA) will host the World Pickleball Championship (WPC) Series in India for the first time. The event is scheduled for November 12th to 17th, 2024, in Mumbai. It will feature top pickleball talent from around the world, following successful tournaments in Vietnam and Bali. Approximately 650 players from 6 to 7 countries, including Australia, Vietnam, Taiwan, Poland, and Singapore, will participate.

8. Which ministry has developed the National Maritime Heritage Complex at Lothal?

- A. Ministry of Defence
B. Ministry of Jal Shakti
C. Ministry of Ports, Shipping and Waterways
D. Ministry of Urban Development



- ✓ The Union Cabinet approved the National Maritime Heritage Complex at Lothal, Gujarat, on 9 October 2024. This complex will be developed in two phases at the ancient Indus Valley site of Lothal. It aims to be an international tourist destination showcasing India's maritime heritage from ancient to modern times. The Union Ministry of Ports, Shipping and Waterways, in collaboration with the Gujarat government, is overseeing the project under the Sagarmala scheme. Built on 400 acres, it will cost approximately Rs 4500 crore, with work beginning in March 2024.

9. Which virus has recently emerged in Rwanda with a high fatality rate?

- A. Mpox
B. Marburg
C. Ebola
D. Japanese encephalitis



- ✓ The Marburg virus, part of the filovirus family, is one of the deadliest pathogens, with case fatality rates ranging from 24% to 88%. The recent outbreak in Rwanda has already resulted in 12 deaths among 46 infections, predominantly affecting medical workers.

- ✓ Marburg spreads through direct contact with infected bodily fluids and contaminated materials. Initial symptoms include high fever and severe headache, progressing to hemorrhagic symptoms. Currently, there are no approved vaccines for this viral infection.

10. What is the name of second indigenous Survey Vessel recently inducted in Indian Navy?

- A. Nirdeshak
- B. Vikrant
- C. Kaveri
- D. Kalahari



- ✓ Recently, the Indian Navy received Nirdeshak, the second of four Survey Vessel ships, built at Garden Reach Shipbuilders & Engineers in Kolkata. Nirdeshak features over 80% indigenous content, reflecting the commitment to 'Aatmanirbhar Bharat.' These are the largest survey vessels in India, designed for comprehensive coastal and deep-water hydrographic surveys of ports and navigational channels. The ship will also gather oceanographic and geophysical data for both defense and civil applications.

11. Which day is observed as World Post Day?

- A. October 8
- B. October 9
- C. October 10
- D. October 11



- ✓ World Post Day is celebrated every year on October 9 to highlight the importance of the postal system in daily life, global communication, and economic growth. This year marks the 150th anniversary of the Universal Postal Union (UPU), established in 1874 in Bern, Switzerland, which transformed international mail exchange.
- ✓ The theme for this year, "150 Years of Enabling Communication and Empowering People Across Nations," honors the UPU's efforts to streamline international mail services and create a unified postal system for easier mail exchange between countries.

12. Which university has launched The Climate Institute to address environmental challenges?

- A. Lucknow University
- B. Ahmedabad University
- C. Mumbai University
- D. Madras University



- ✓ Ahmedabad University has launched The Climate Institute, focusing on research, education, and impact to address climate issues. The Institute is developing India's first comprehensive Climate, Energy, and Environmental education program for future leaders.
- ✓ It operates in three areas: Energy and Climate Change, Cities and Settlements, and Air and Water, promoting interdisciplinary research and partnerships to inform policy design and innovation.

IMPORTANT LINKS

TNPSC Current Affairs

<https://www.winmeen.com/tnpsc-tamil-current-affairs/>

Winmeen: Install the Winmeen App - Daily Free & Premium Tnpsc Study Materials & Online Test

<https://play.google.com/store/apps/details?id=co.robin.jbzwb>

Winmeen: Winmeen Tnpsc Test Series - Samacheer lesson Wise Test + Previous Year Model Test for Tnpsc Group 1,2, 4 & VAO

<https://wp.me/p7JanY-ag8>
