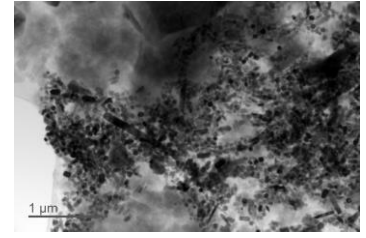


1. Recently, researchers have spotted 'Magnetofossils' in which region of India?

- A. Ladakh
- B. Assam
- C. Manipur
- D. Gujarat



- ✓ Researchers have discovered magnetofossils, fossil remains of magnetic particles produced by magnetotactic bacteria, in rock varnish layers in Ladakh, India. These prokaryotic organisms align with the earth's magnetic field and are found in freshwater and marine habitats. They use the magnetic field to locate optimal oxygen levels. The bacteria contain iron-rich particles in small sacs acting as compasses, forming tiny crystals of magnetite or greigite. These crystals help them navigate changing oxygen levels in water.

2. Which ministry recently launched SIMS 2.0, the upgraded Steel Import Monitoring System?

- A. Ministry of Agriculture
- B. Ministry of Power
- C. Ministry of Steel
- D. Ministry of Science and Technology



इस्पात मंत्रालय
MINISTRY OF
STEEL

- ✓ The Ministry of Steel launched the 'Steel Import Monitoring System' (SIMS) 2.0 Portal, featuring a robust data entry system for consistent and authentic data, promoting transparency and accountability. Union Minister of Steel and Heavy Industries released the second volume of "Safety Guidelines for Iron and Steel Sector," aiming to enhance safety standards and reduce accidents.
- ✓ SIMS, introduced in 2019, provides detailed steel import data, aiding policy-making and industry growth. SIMS 2.0, with API integration and database connections, improves quality control, risk management, and Customs' analysis of steel imports, benefiting the domestic steel industry.

3. Recently, the Atomic Minerals Directorate for Exploration and Research (AMD) discovered 1600 tonnes of lithium resources in which state?

- A. Tamil Nadu
- B. Karnataka
- C. Jharkhand
- D. Rajasthan



- ✓ Union Minister Dr. Jitendra Singh announced the discovery of 1,600 tonnes of lithium resources in Karnataka's Mandya and Yadgiri districts. The Atomic Minerals Directorate for Exploration and Research (AMD), under the Department of Atomic Energy, identified these resources through preliminary surveys and subsurface exploration in the Marlagalla area.

- ✓ **Lithium, a highly sought-after element globally, was first discovered in 1817 by Johan August Arfvedson. Derived from the Greek word "lithos" meaning stone, lithium is the metal with the lowest density, reacts vigorously with water, and is toxic in nature.**

4. Recently, which country has unveiled the country's new air-to-surface missile dubbed "Wind Demon"?

- A. Japan
- B. China
- C. Israel
- D. India



- ✓ **Israel Aerospace Industries (IAI) recently unveiled the "Wind Demon," an advanced air-to-surface cruise missile designed for precise, long-range attacks at low cost. Developed by IAI, it can be launched from helicopters or aircraft to strike mobile and stationary targets without operator intervention. The missile has a range of over 200 kilometers.**

5. Which country has emerged as the top recipient of Indian government aid to foreign countries, according to the Union Budget 2024-25?

- A. Nepal
- B. Bhutan
- C. Maldives
- D. Bangladesh



- ✓ **The Ministry of External Affairs allocated ₹4,883 crore for aid in the 2024 union budget, strategically using financial assistance to meet foreign policy goals. Key allocations include the highest aid to Bhutan, and significant increases for Nepal and Sri Lanka. Despite past diplomatic tensions, Afghanistan and Maldives maintain previous aid levels. Myanmar receives aid as part of regional assistance. Africa, Central Asia, South Asia, and Latin America benefit from India's multilateral and bilateral aid programs. The Chabahar Port Project in Iran continues to receive ₹100 crore annually, unchanged for the past three years.**

6. What is the main objective of the 'Poshan Bhi Padhai Bhi' initiative?

- A. To improve nutritional standards in schools
- B. To enhance early childhood care and education in Anganwadi centres
- C. To promote adult education
- D. To develop infrastructure for secondary education



- ✓ **Launched on May 10, 2023, the 'Poshan Bhi Padhai Bhi' (PBPB) initiative aims to upskill Anganwadi workers to enhance early childhood care, education, and nutrition services for children under six. By June 2024, 11,364 State Level Master Trainers and 1,877 Anganwadi Workers have been trained.**

- ✓ The program focuses on transforming Anganwadi centres into learning hubs with quality infrastructure and play equipment. It includes two curriculum frameworks: "Navchetana" for children from birth to three years, emphasizing holistic stimulation, and "Aadharshila" for children aged three to six years, covering all developmental domains. Special attention is given to Divyang children.

7. 'Cassava villages' are located in which Northeastern state?

- A. Nagaland
- B. Manipur
- C. Assam
- D. Mizoram



- ✓ In Mokokchung district, Nagaland, 'Cassava villages' are replacing plastics with compostable bioplastic bags made from Cassava starch, produced by the MSME Ecostarch. Cassava, a tropical crop native to South America, is known for its high starch content, making it ideal for bioplastics and bioethanol production.

8. SAMADHAN Portal was launched by which ministry?

- A. Ministry of Agriculture
- B. Ministry of Defence
- C. Ministry of Labour & Employment
- D. Ministry of Urban Development



श्रम एवं रोजगार मंत्रालय
GOVERNMENT OF INDIA
**MINISTRY OF LABOUR &
EMPLOYMENT**

- ✓ The Ministry of Labour & Employment launched the SAMADHAN Portal to address industrial disputes for workmen, employers, and trade unions under the Industrial Disputes Act, 1947. It promotes efficiency and transparency through online filing, faster disposal, and internal monitoring. The portal also covers cases under the Payment of Gratuity Act, 1972, Minimum Wages Act, 1948, Payment of Wages Act, 1936, Equal Remuneration Act, 1976, and Maternity Benefit Act, 1961.

9. Recently, which ministry has unveiled a comprehensive report titled "Economic Case for Investment in the Well-being of Adolescents in India"?

- A. Ministry of Home Affairs
- B. Ministry of Agriculture
- C. Ministry of Health & Family Welfare
- D. Ministry of Rural Development



स्वास्थ्य एवं
परिवार कल्याण मंत्रालय
MINISTRY OF
**HEALTH AND
FAMILY WELFARE**

सत्यमेव जयते

- ✓ Ministry of Health & Family Welfare released a report titled "Economic Case for Investment in the Well-being of Adolescents in India," highlighting key areas for investment in adolescent health.

India has the largest adolescent population (253 million) globally. Between 2000 and 2019, the adolescent mortality rate dropped by over 50%, and fertility rates fell by 83%.

- ✓ Secondary school completion rates more than doubled from 22% in 2005 to over 50% in 2020. However, fatal road accidents among adolescents under 18 increased by 22.7% from 2021 to 2022. Recommended interventions are projected to boost India's economy by 10.1% of annual GDP.

10. Recently, India signed a 'Cultural Property Agreement' with which country to prevent and curb the illicit trafficking of antiquities?

- A. USA
- B. Russia
- C. China
- D. Japan



- ✓ On July 26, 2024, India and the USA signed their first-ever Cultural Property Agreement (CPA) to combat the illicit trafficking of antiquities. The agreement, signed by Shri Govind Mohan and US Ambassador Eric Garcetti at the World Heritage Committee in New Delhi, aligns with the 1970 UNESCO Convention. The CPA aims to secure India's cultural heritage and return smuggled artifacts.

11. India's first integrated agri-export facility has recently been approved for which port?

- A. Cochin Port
- B. Jawaharlal Nehru Port
- C. Deendayal Port
- D. Mangaluru Port



- ✓ India's first Integrated Agri-Export Facility will be established at Jawaharlal Nehru Port in Mumbai, enhancing agricultural export and import capabilities. Ports Minister Sarbananda Sonowal approved the project to be developed in a public-private partnership. The facility aims to streamline logistics, reduce wastage, and provide better prices for agricultural products. It will support the export of key items such as non-basmati rice, maize, spices, onion, and wheat. Sonowal emphasized that this initiative is a significant step toward empowering farmers and boosting India's agricultural sector.

12. Recently, which country has assumed the Chair of Asian Disaster Preparedness Centre (APDC) for 2024-25?

- A. India
- B. Indonesia
- C. Thailand
- D. Philippines



- ✓ India assumed the chairmanship of the Asian Disaster Preparedness Center (ADPC) for 2024-25 on July 25, 2024, in Bangkok, Thailand, taking over from China. Rajendra Singh, Head of the National Disaster Management Authority, represents India. As chairman, he also chaired the 5th Board of Trustee meeting of the ADPC.
- ✓ Established in 1986, ADPC is a non-profit regional organization promoting disaster risk reduction and climate resilience in Asia and the Pacific. It addresses the impacts of natural hazards and climate change, supporting global initiatives on climate and urban resilience. Founding members include China, India, Nepal, Bangladesh, Cambodia, Pakistan, Philippines, Sri Lanka, and Thailand.

IMPORTANT LINKS

TNPSC Current Affairs

<https://www.winmeen.com/tnpsc-tamil-current-affairs/>

Winmeen: Install the Winmeen App - Daily Free & Premium Tnpsc Study Materials & Online Test

<https://play.google.com/store/apps/details?id=co.robin.jbzwb>

Winmeen: Winmeen Tnpsc Test Series - Samacheer lesson Wise Test + Previous Year Model Test for Tnpsc Group 1,2, 4 & VAO

<https://wp.me/p7JanY-ag8>
